

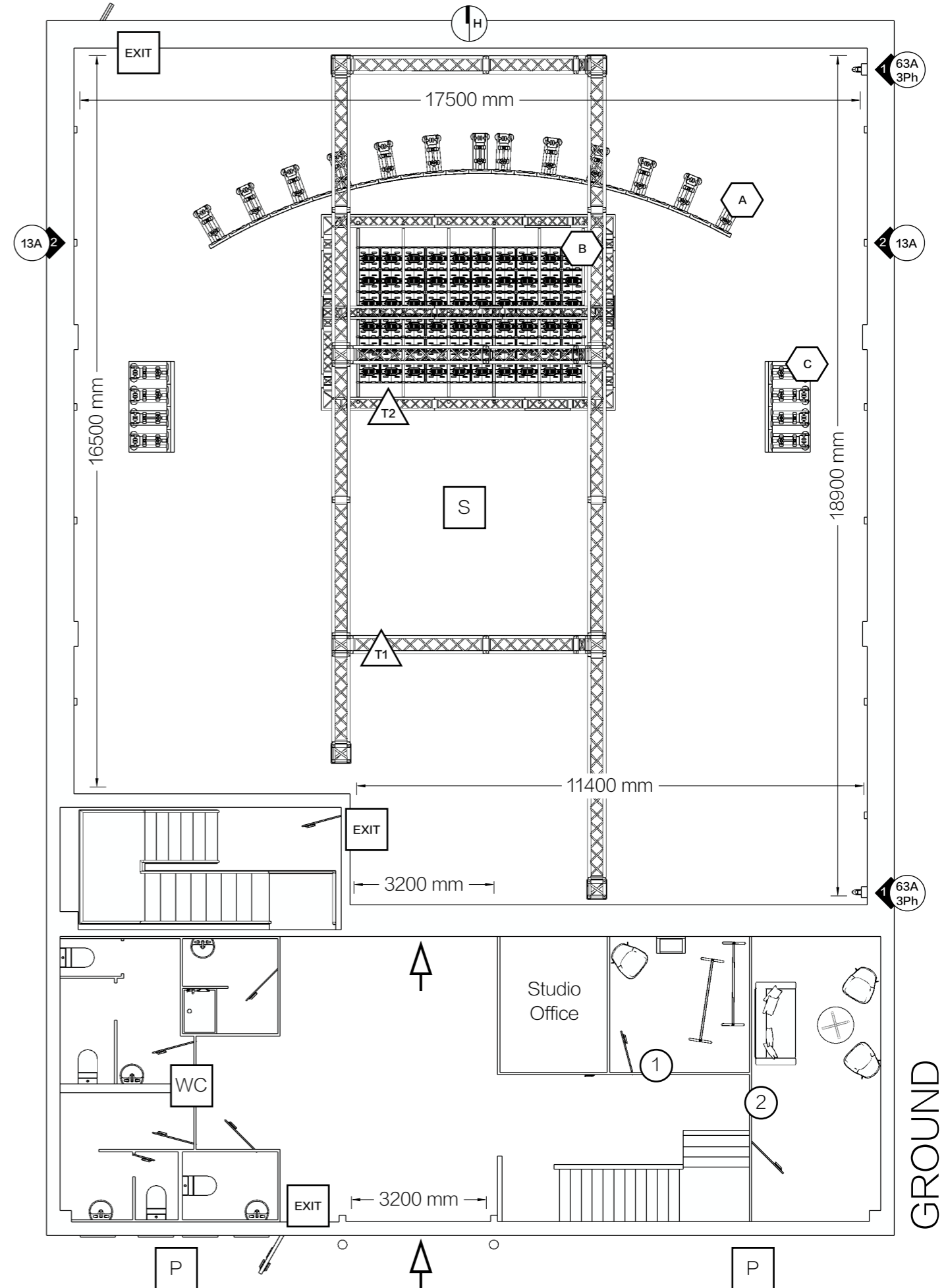
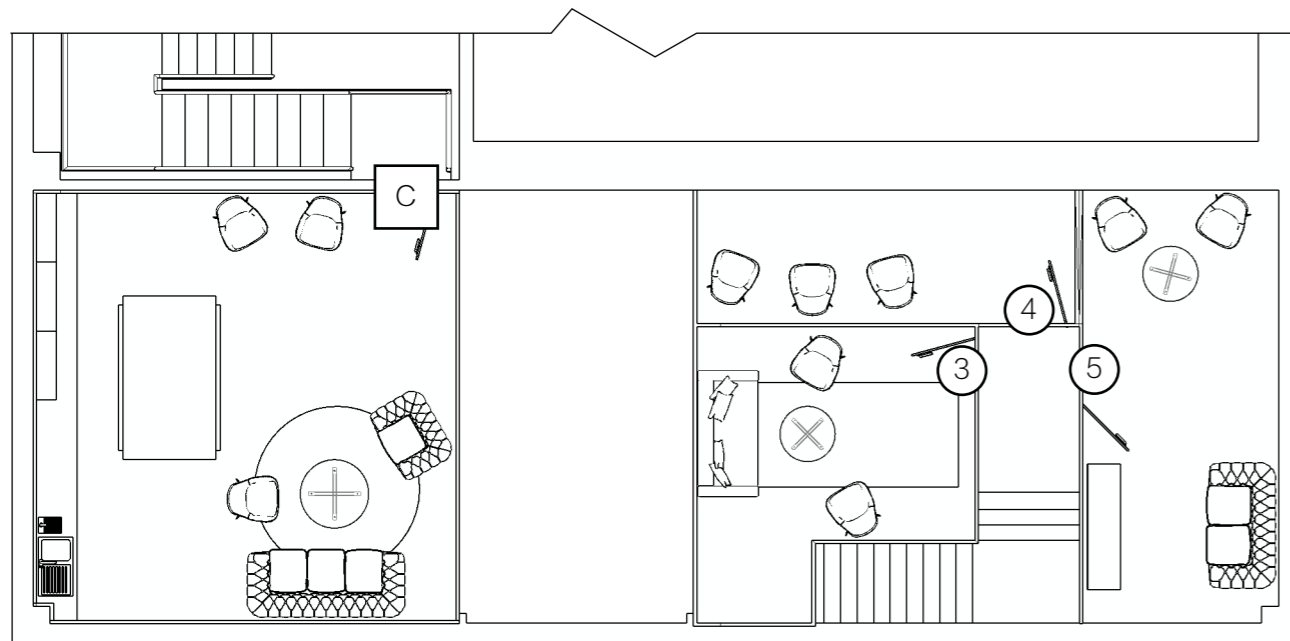
- S Main Studio Space
- C Canteen
- WC M, F, & Disabled, Shower
- ↑ Drive In Access
- P Parking for 10 Spaces, Plus Loading
Additional Street Parking on Henley Rd

- 1 Production Room
- 2 Production Room with Gallery Window to Studio
- 3 Production Room
- 4 Production Room with Gallery Window to Studio
- 5 Production Room

- 63A 3Ph 63A 3 Phase Power Outlet
- 13A 2 13A Power Outlets
- A Main LED Wall 12m x 4.5m Curved
- B Ceiling LED 5m x 3m, Tilt-able
- C Mobile LED Totems 2m x 2m
- T1 Main Trussing Rigg, Fixed
- T2 Sub-Truss, Motorised & Tilt-able
- H 6400 mm Floor to Ceiling Max Height
- EXIT Fire Exit

W3W flight.odds.shaky

— A3 Scale 1:110mm

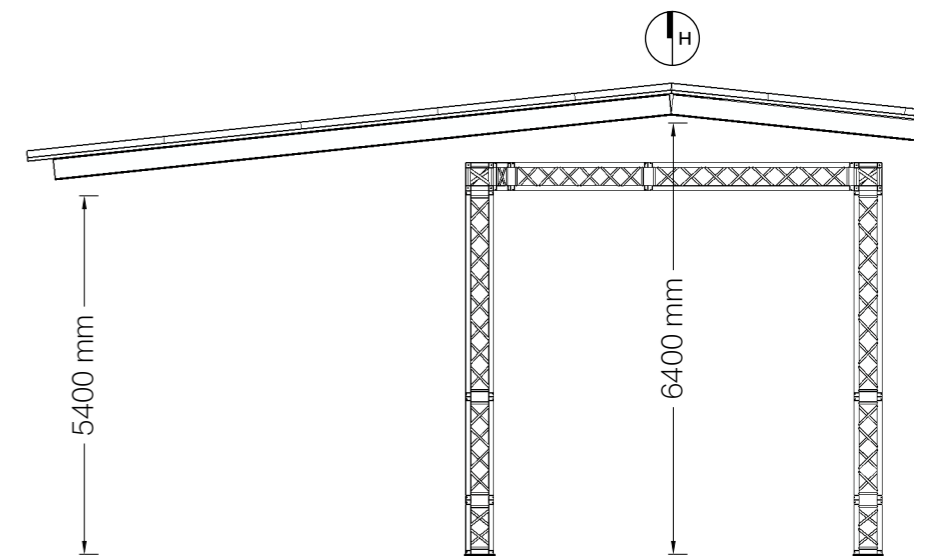
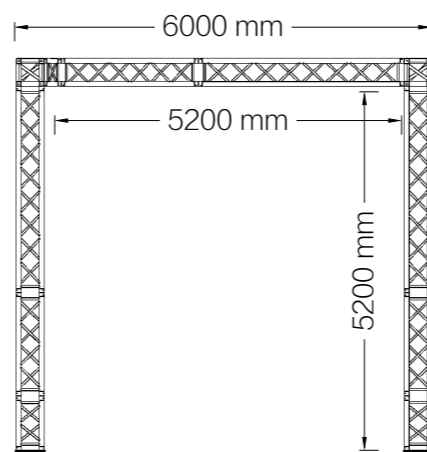
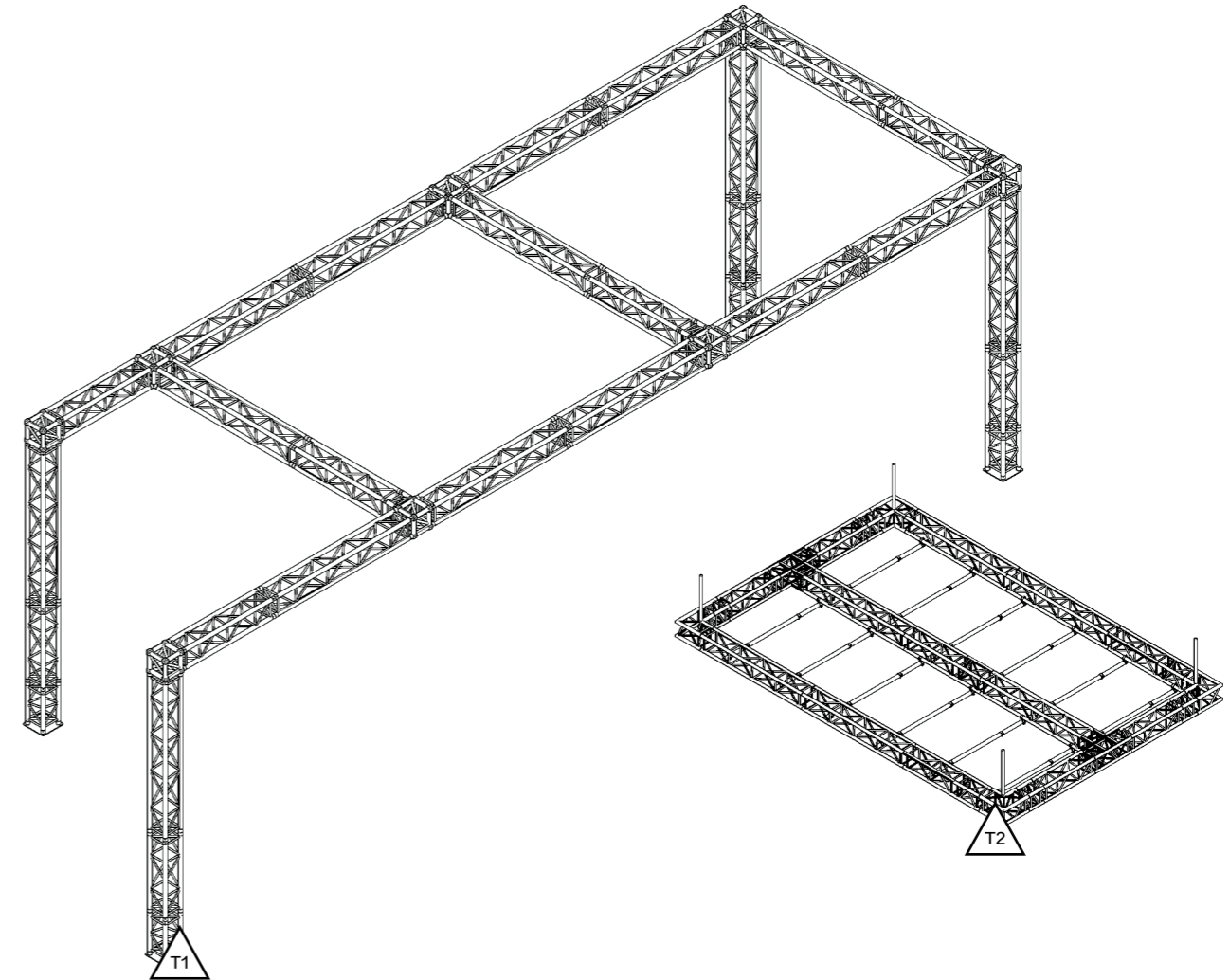
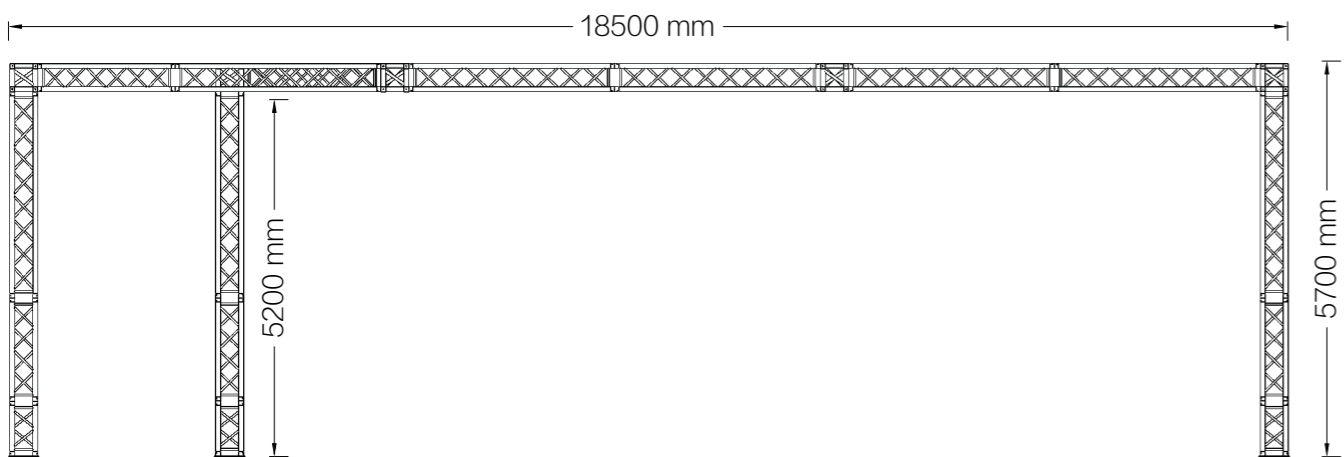
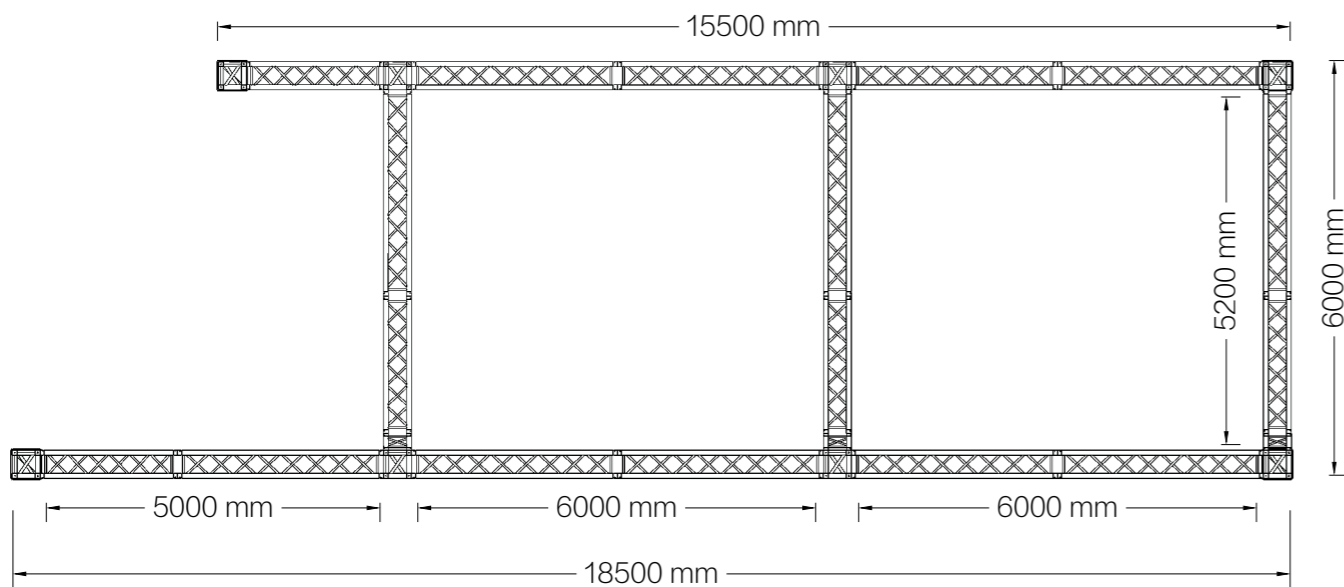



 Main Trussing Rigg, Fixed. Max Load 2 Tonne / 2000kg (inc. Sub-Truss)

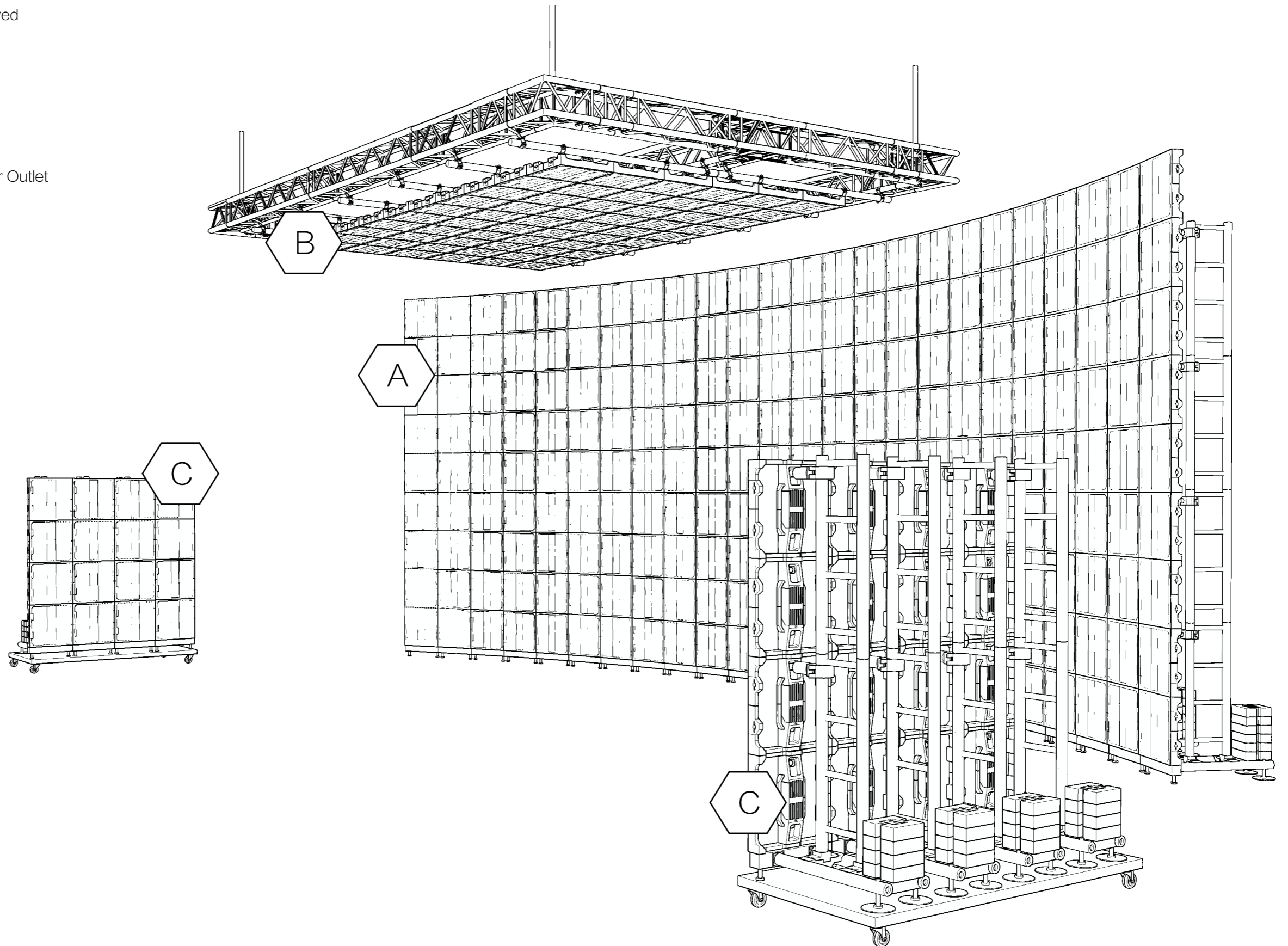
 Sub-Truss, Motorised & Tilt-able. For LED Ceiling Use

 6400 mm Floor to Ceiling Max Height, to Apex of Roof

 A3 Scale 1:110mm



- A Main LED Wall 12m x 4.5m Curved
- B Ceiling LED 5m x 3m, Tilt-able
- C Mobile LED Totems 2m x 2m
- 4K On Brompton 4K Processing
- 63A
3Ph Requires 1x 63A 3 Phase Power Outlet
-  No Scale



- S Silvertown Studios
- P Parking for 10 Spaces, Plus Loading Access
- P2 Additional Parking
- P3 On-Street Parking, Henley Rd & Pier Rd
- A3 Scale 1:800mm
- W3W /// flight.odds.shaky

